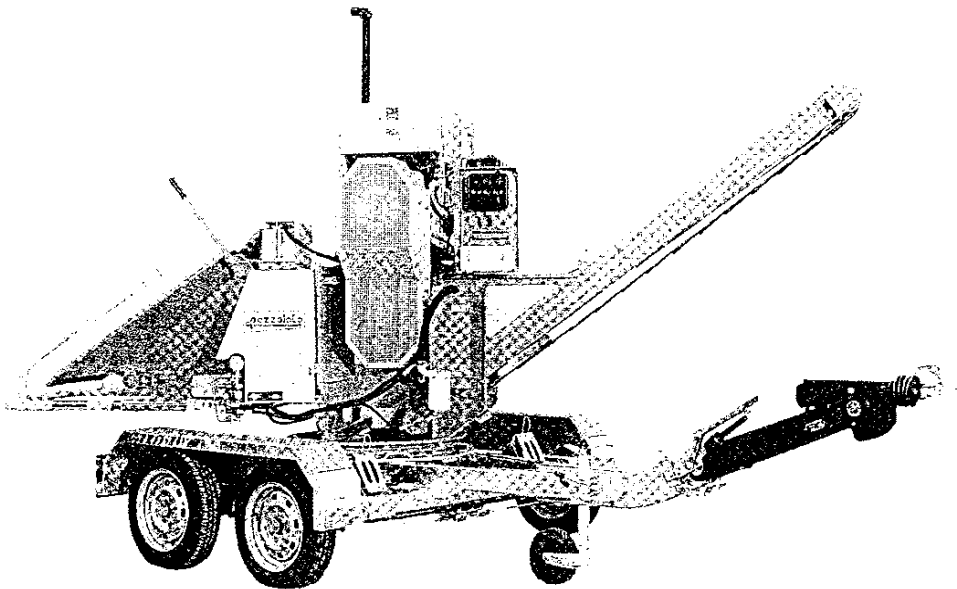




## **SPARE PARTS MANUAL**

# **SHREDDER K 4000 - S 4000**



**Issue : 10/01 - Rev. 01**

**PEZZOLATO Officine costruzioni meccaniche S.p.A.**  
**Tel (0175) 278077 - Fax (0175) 278 421**  
**12030 ENVIE ( CN ) - Via Provinciale Revello, n° 89**

S4000  
K4000

## HOW TO ORDER SPARE PARTS

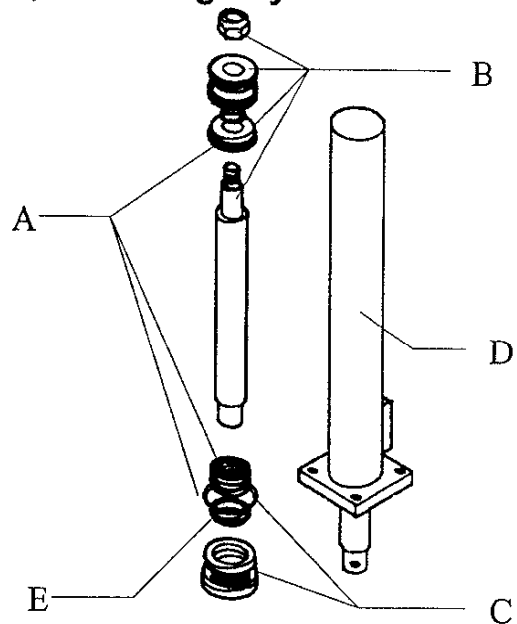


When ordering spare parts specify the type of the machine and its part number, the position, the page number, the part number of item and the Issue of issue of the spare parts list.

EXAMPLE: Shredder S4000  
**MATRICULA** : CI 952  
**Spare part Pos 17 Page 23 Manual issue 02/2000 :**  
**Hydraulic cylinder COD: 0404040004**

When ordering a simple part of a hydraulic cylinder specify at the end of its part number one of the following letters, according to your needs:

- A = Complete set of gaskets kit for cylinder
- B = Complete rod with gaskets
- C = Complete nut with gaskets
- D = Cylinder liner
- E = Nut gaskets



EXAMPLE: Complete set of gaskets for hydraulic cylinder COD 0404040015  
Require: COD : 0404040015A

**S4000  
K4000**

**INDEX**



ROTOR ASSEMBLY-----	Page 3-4
MOTORIZATIONS ASSEMBLY PDF VERS. -----	Page 5-6
BIMA IMR 6 OVERGEAR -----	Page 7-8
MOTORIZATIONS ASSEMBLY LOMBARDINI 9LD AND HATZ ENGINE ----	Page 9-10
MOTORIZATIONS ASSEMBLY VM SUN AND ELECTRIC ENGINE -----	Page 11-12
FEEDING CHAIN ASSEMBLY -----	Page 13-14
UPPER ROLLER ASSEMBLY -----	Page 15-16
ELEVATING BELT ASSEMBLY-----	Page 17-18
WOOD-CHIPPER MOBILE ROLLER ASSEMBLY -----	Page 19-20
S 4000 HYDRAULIC CIRCUIT -----	Page 21-22
TROLLEY ASSEMBLY-----	Page 23-24



S4000  
K4000

SPARE PARTS LIST ROTOR  
ASSEMBLY



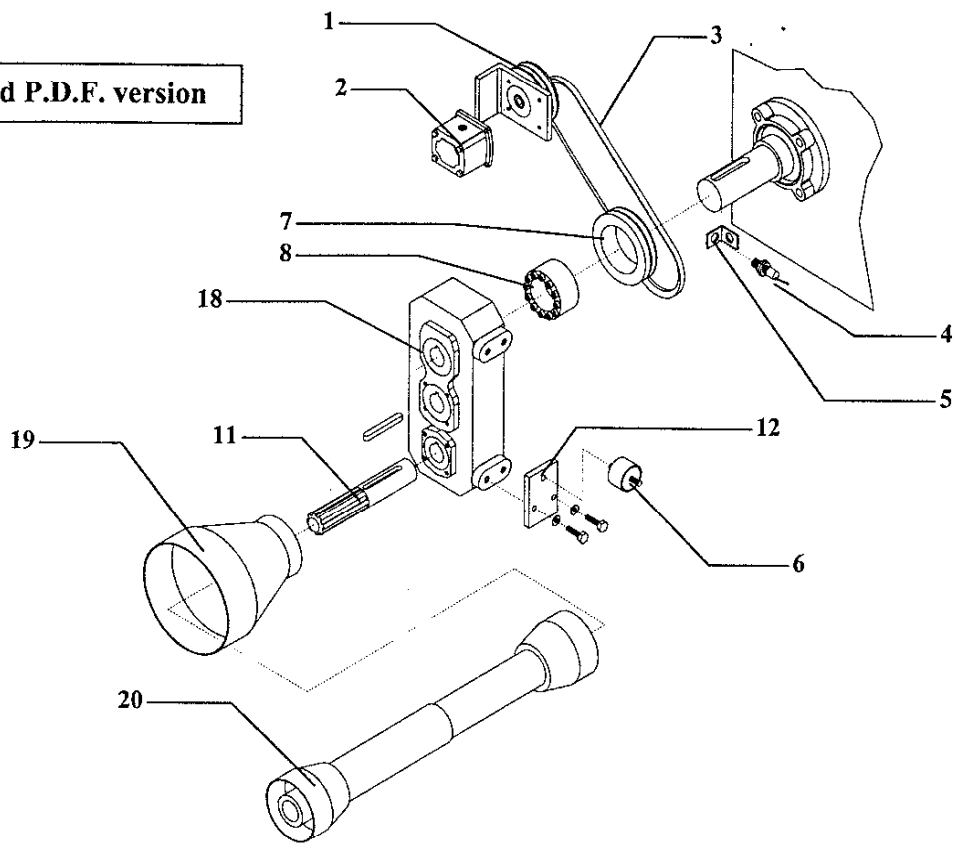
POS	DENOMINATION	CODE
1	Flywheel D.400	0001300100
2	Taper lock SIT-LOCK 5A 45x75	0201050008
3	Screw T.S.E.I. M10x25	
4	Knife K 4000	0001400100
5	Guard shaft protection	
6	Support FYC 45 TF	0230540002
7	Carter	
8	Shaft hammers holder	0001100300
9	Fixed hammer	0001401300
10	Spacer x fixed hammer	0001902100
11	Rotor	0001700800
12	Rotor protection	
13	Counter-hammer (comb)	0003301100
14	Screw T.C.E.I. M12x50 + locking nut M12	
15	Nut M10	
16	Screw T.E. M10x40	
17	Hammer 50x6x120 SP=6	0001400300
18	Spacer D.45x18.7x20.6	0001901002
19	Hammer 50x12x120 SP=12	0001401400
20	Spacer D.45x18.7x9.2	0001906500
21	Pin x screen	0001000100
22	Screen x hammers SP=6	0002300300
23	Elastic pin D.5x45	
24	Maul x extraction hammers shaft	0010000100
25	Screw x extraction hammers shaft	0009900300
26	Screen x hammers SP=12	0002300900

S4000  
K4000

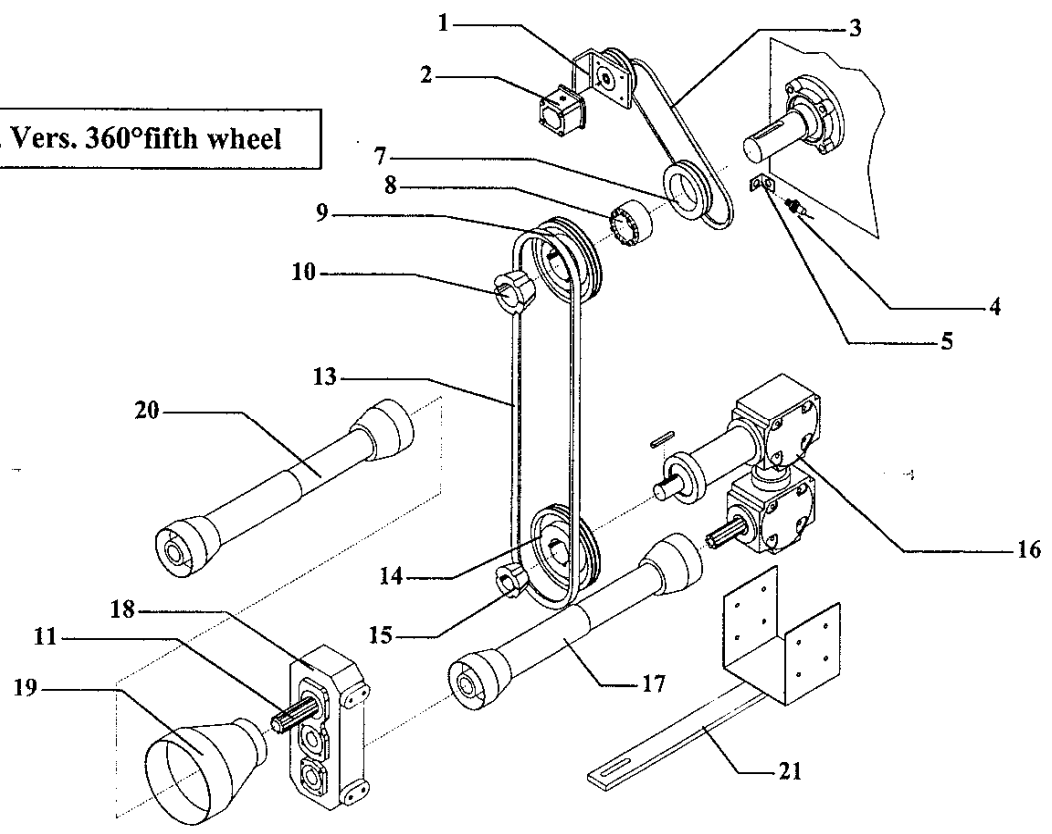
MOTORIZATIONS ASSEMBLY P.D.F.  
VERS.



Fixed P.D.F. version



P.D.F. Vers. 360° fifth wheel



S4000  
K4000

SPARE PARTS LIST MOTORIZATIONS  
ASSEMBLY P.D.F. VERS.

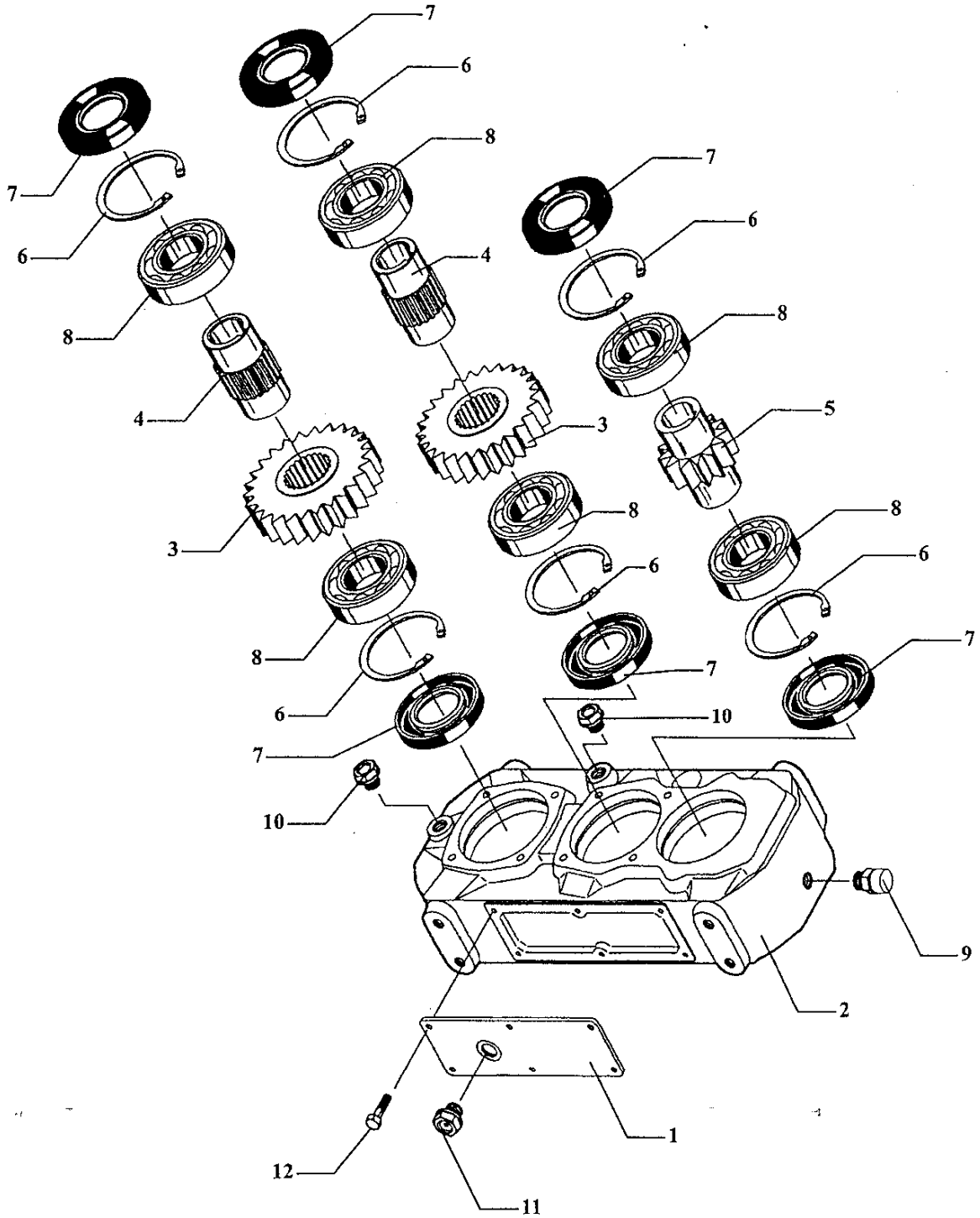


POS	DENOMINATION	CODE
1	Tightener pump support	0798170001
2	Pump PLP 20.4 D/AF	0418210011
3	Belt SPA 782	0217110782
4	Sensor INDUT BG 12/2 N-FAM Mt.2 x NO STRESS	0522000001
5	Bracket sensor support NO-STRESS	0002706700
6	Anti vibrating D.60 H.45 60A M10	0216000007
7	Pulley D.120 2 SPA F.75	0011301100
8	Taper lock SIT-LOCK 1 45x75	0201010008
9	Pulley x B.C.D.200 4 SPA	0231082402
10	Conic bush D.45	0231090745
11	Spline shaft x overgear IMR 6	0799030009
12	Plate anti vibrating support	
13	Belt SPA	
14	Pulley x B.C. D.200 4 SPA	0231082403
15	Conic bush D.35	0231090735
16	Complete angle assembly	0798070003
17	Cardan 7.105061CETO7S07 L=61	0228105102
18	Reduction gear IMR6 R1/2 Art. 6046001020	0306003000
19	Guard-holder x cardan cod. 4170402 oval	0239000002
20	Cardan 7.105121CETO7098 L=121	0228105403
21	Assembly lower support	0002714800

S4000  
K4000

BIMA IMR 6 OVERGEAR

pezzolato





S4000  
K4000

SPARE PARTS LIST BIMA IMR 6  
OVERGEAR



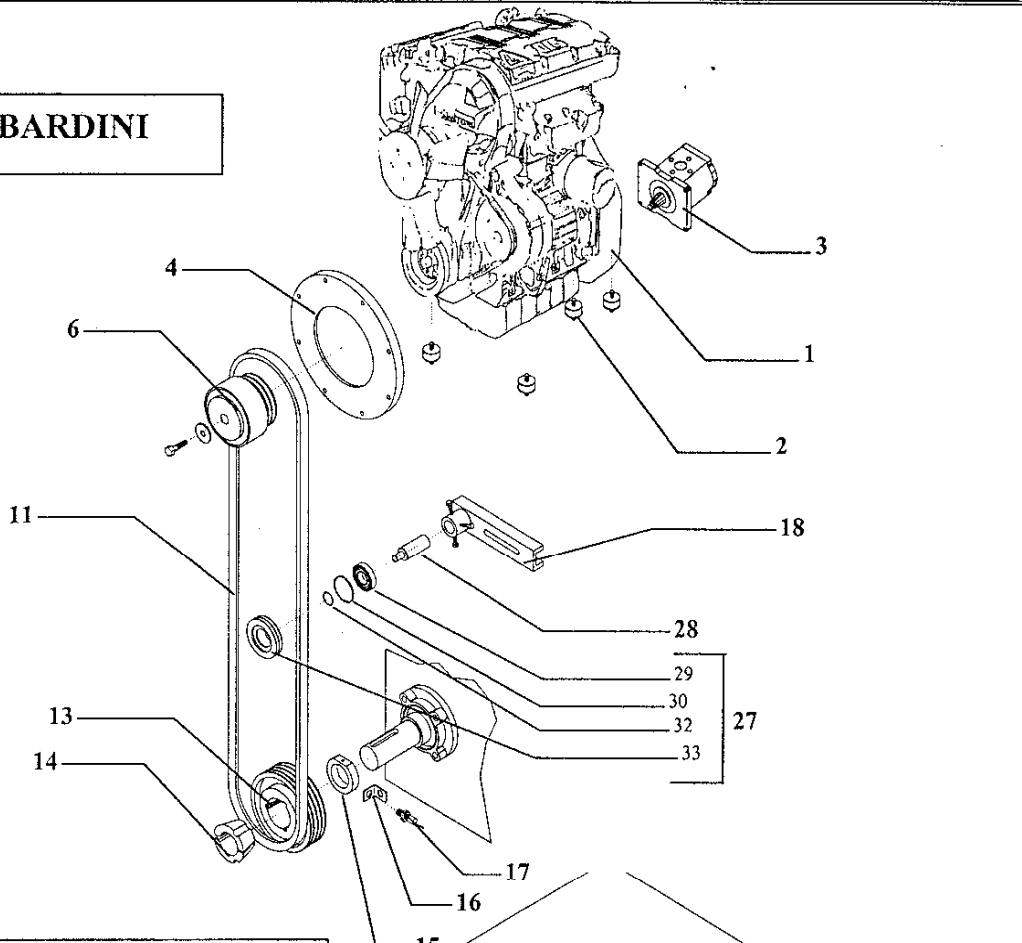
POS	DENOMINATION	CODE
1	Cover 2015.002.201	
2	Box 2046.001.101	
3	Gear 2046.003.442	
4	Shaft 2046.004.542	
5	Shaft 2046.002.542	
6	Seeger 90I 8025.627.000	
7	Gas ring 50x90x10 8050.588.000	
8	Bearing 6210 8200.312.000	
9	Oil plug 3/8" GAS 8600.140.000	
10	Oil plug 3/8" GAS 8600.144.000	
11	Oil plug 3/8" GAS 8625.136.000	
12	Screw M6x16 UNI 5739 8675.065.100	

S4000  
K4000

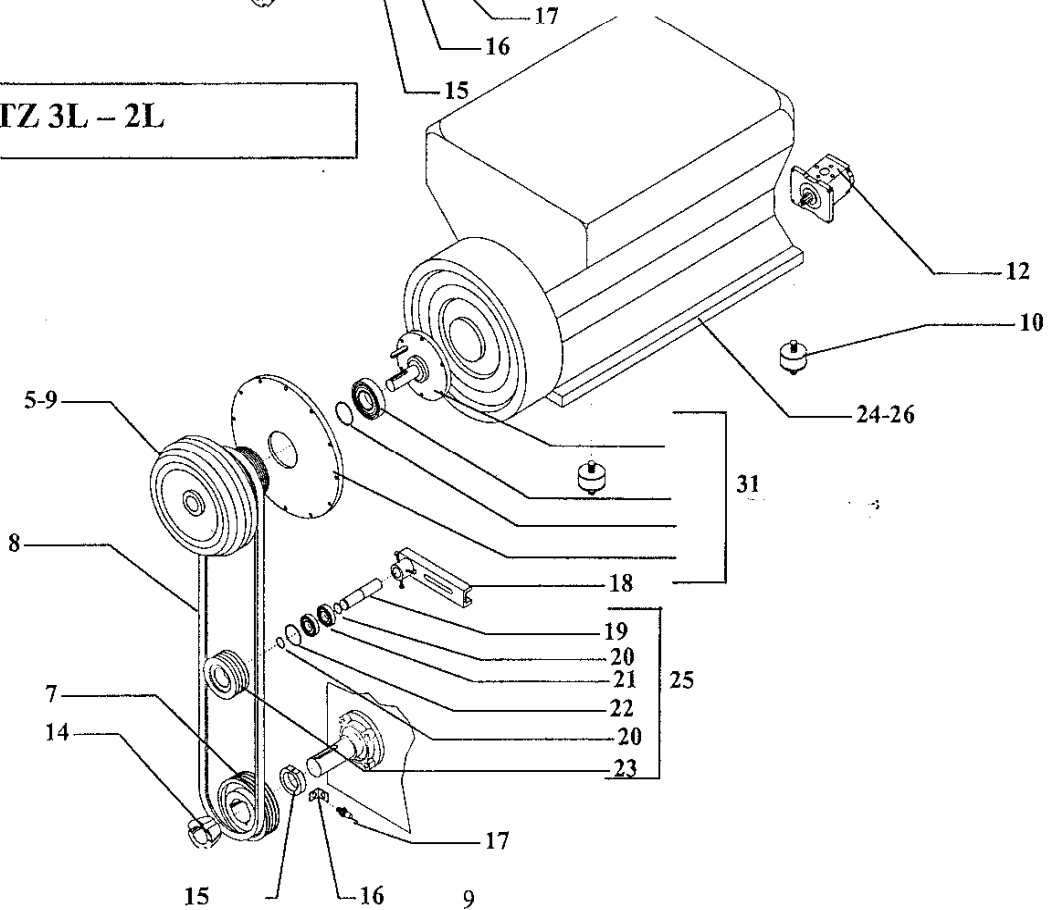
MOTORIZATIONS ASSEMBLY  
LOMBARDINI 9LD AND HATZ ENGINE



LOMBARDINI



HATZ 3L - 2L



**S4000  
K4000**

**SPARE PARTS LIST MOTORIZATIONS ASSEMBLY  
LOMBARDINI 9LD AND HATZ ENGINE**



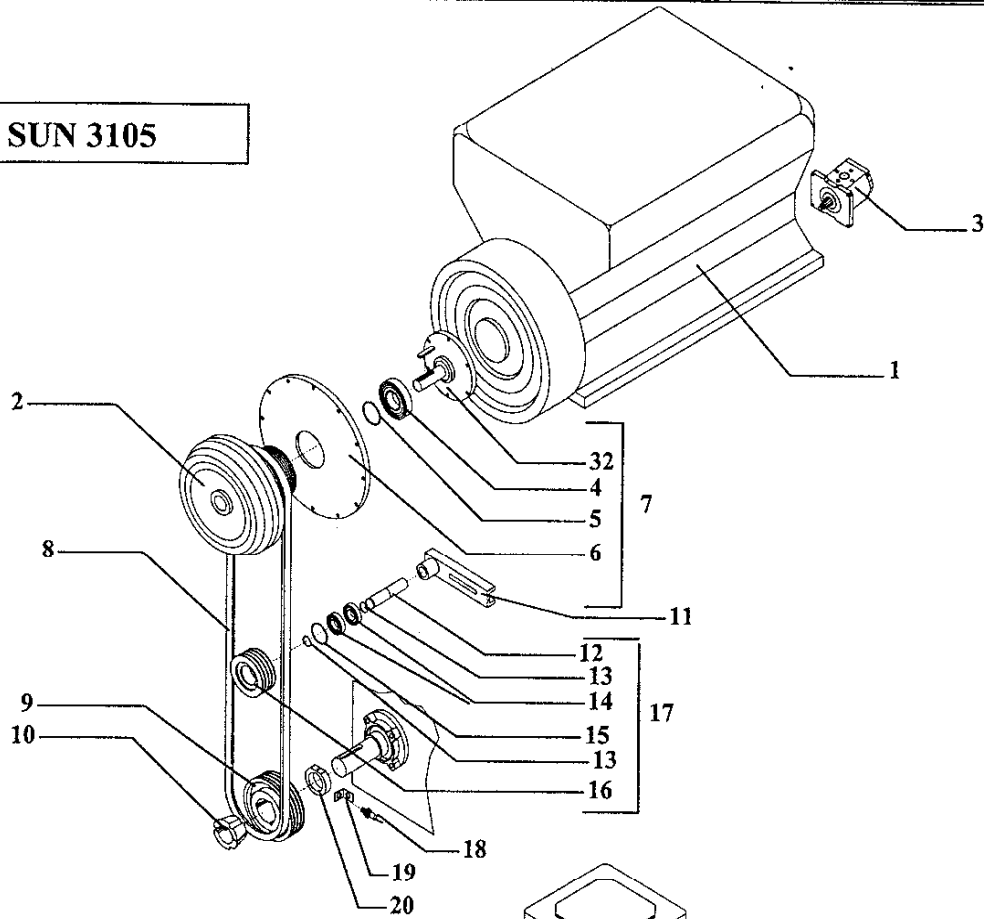
POS	DENOMINATION	CODE
1	Lombardini 9LD 625-2 PUL Gr2 engine	0302210000
2	Anti vibrating	
3	Pump PLP 20.6.3S/AF	0418210027
4	Flange x Lombardini engine	
5	Coupling ROTOFLUID BETA 30x80 d.140 4 SPA ( HATZ 2L)	0320005000
6	Centrifugal pulley D.172 2 SPA	0231070005
7	Pulley x B.C. D.160 4 SPA	0231102436
8	Belt SPA 1682 ( HATZ 3L)	0217111682
9	Coupling ROTOFLUID BETA 40x90 D. D.140 5 SPA ( HATZ 3L)	0320006000
10	Anti vibrating D.75 L.50 M12	0798010001
11	Belt SPA 1732	0217111732
12	Pump PLP20.4 S/12B2 hoses	0418210012
13	Pulley x B.C. D.250 2 SPA	0231102252
14	Conic bush D.34.5 worked	0231090003
15	Ring x sensor D.75	0001902000
16	Sensor support bracket NO STRESS	0002706700
17	Sensor INDUT BG 12/2 N-FAM Mt.2 x NO STRESS	0522000001
18	Turnbuckle x snub pulley	5070900006
19	Shaft x tightener pulley	
20	Seeger 30 E	0234103000
21	Bearing 6206 2RS	0229015010
22	Seeger 62 I	0234206200
23	Tightener pulley D.140 4 SPA	0231242002
24	HATZ 2 L41C engine	0302280000
25	Complete tightener pulley D.140 4 SPA	0798140041
26	HATZ 3L41C engine	0302260000
27	Complete tightener pulley D.70 2 SPA	0798140048
28	Shaft for tightener pulley (D.70 2 SPA)	5040900002
29	Bearing 6203 2Z	0229013007
30	Seeger 40 I	0234204000
31	Complete counter-shaft x HATZ engine	0302000021
32	Seeger 17 E	0234101700
33	Pulley D.70 2 SPA (worked)	0231222007

S4000  
K4000

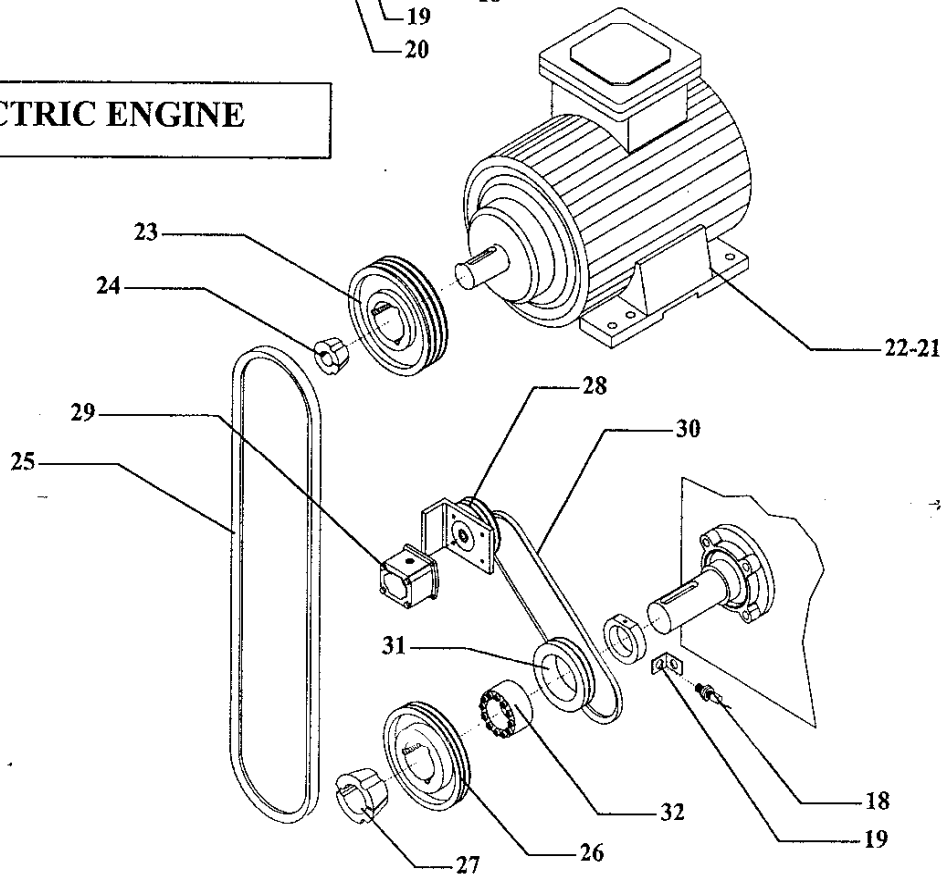
MOTORIZATIONS ASSEMBLY VM SUN  
AND ELECTRIC ENGINE



VM SUN 3105



ELECTRIC ENGINE



S4000  
K4000

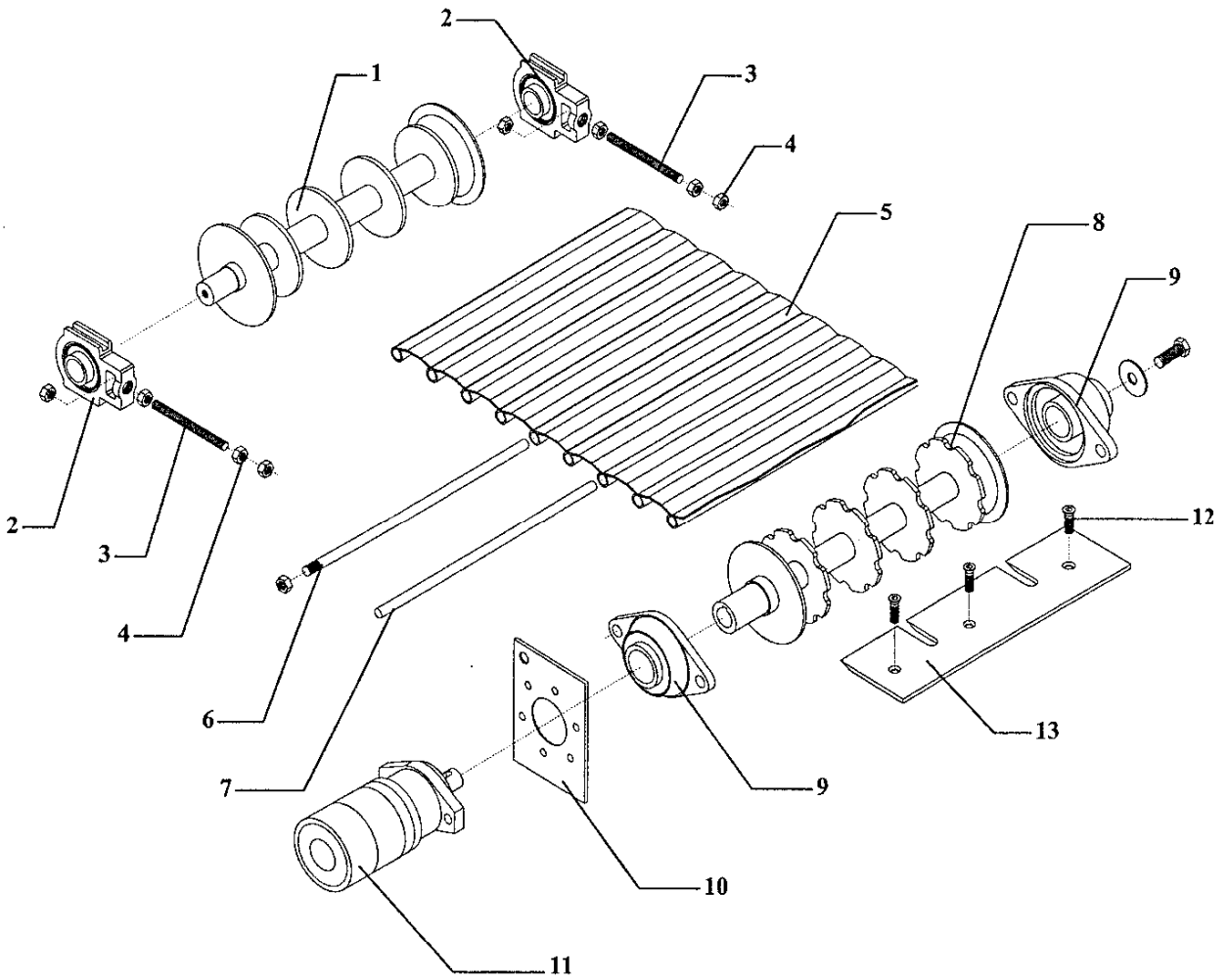
SPARE PARTS LIST MOTORIZATIONS  
ASSEMBLY VM SUN AND ELECTRIC ENGINE



POS	DENOMINATION	CODE
1	VM SUN 3105 engine	0302070000
2	Coupling ROTOFLUID BETA 40x90 D.140 5 SPA	0320006000
3	Pump PLP 20.4D/AF	0418210011
4		
5		
6		
7	Complete counter-shaft VM 3105	
8	Belt SPA 1682	0217111682
9	Pulley x B.C. D.160 4 SPA	0231102436
10	Conic bush D.34.5	0231090003
11	Turnbuckle x snub pulley	5070900006
12	Shaft x tightener pulley	
13	Seeger 30 E	0234103000
14	Bearing 6206 2RS	0229015010
15	Seeger 62 I	0234206200
16	Tightener pulley D.140 4 SPA	0798140041
17	Complete tightener pulley D.140 4 SPA	0798140041
18	Sensor INDUT BG12/2 N-FAM Mt.2 x NO STRESS	0522000001
19	Sensor support bracket NO STRESS	0002706700
20	Ring x sensor D.75	0001902000
21	Three-phase electric engine Kw 18.5 B3 MA180M4	0542121001
22	Three-phase electric engine Kw 22 B3 MA180I4	0542621001
23	Pulley x B.C. D.224 4 SPA	0231102448
24	Conic bush D.48	0231090848
25	Belt SPA 1707	0217111707
26	Pulley x B.C. D.160 4 SPA	0231082409
27	Conic bush D.34.5	
28	Tightener pump support	0798170001
29	Pump PLP 20.4 D/AF	0418210011
30	Belt SPA 782	0217110782
31	Pulley D.120 2 SPA F.75	0011301100
32	Taper lock SIT-LOCK 1 45x75	0201010008

S4000  
K4000

# FEEDING CHAIN ASSEMBLY



S4000  
K4000

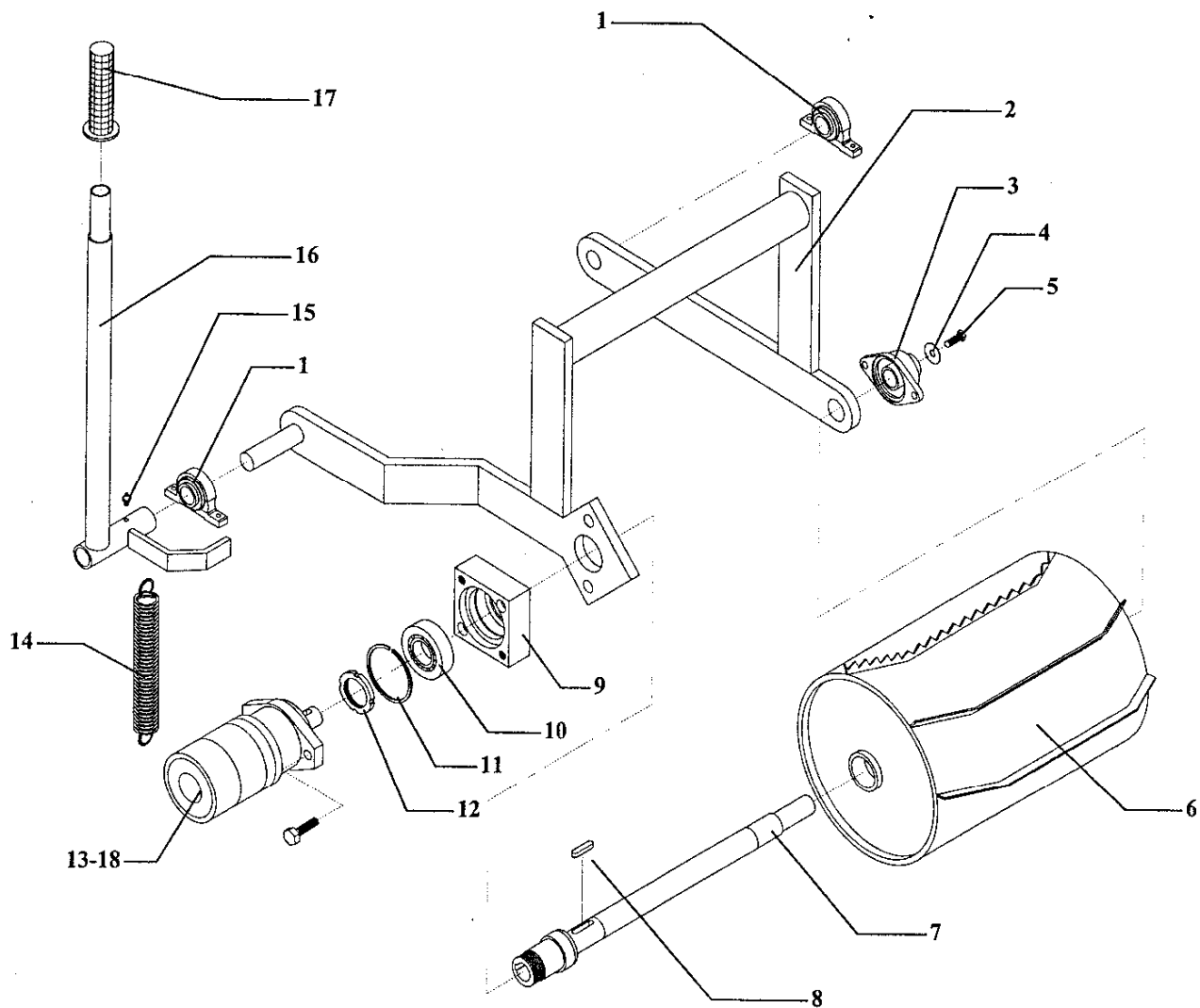
SPARE PARTS LIST FEEDING CHAIN  
ASSEMBLY



POS	DENOMINATION	CODE
1	Catenary idle roller	0001800701
2	Support TU 30 TF	0230090001
3	Turnbuckle M20	5070900007
4	Nut M20	
5	Complete chain S4000	0219030006
6	Chain connection pin	0000100800
7	Fixed pin x chain	0002200900
8	Catenary engine roller	0001800602
9	Support SKF FYTB 40 TF	0230050002
10	Hydraulic engine support plate	0002201300
11	Hydraulic engine AR 160 NC 25	0414216001
12	Screw T.S.E.I. M10x30	
13	Catenary scraper	0001400600

S4000  
K4000

# UPPER ROLLER ASSEMBLY





S4000  
K4000

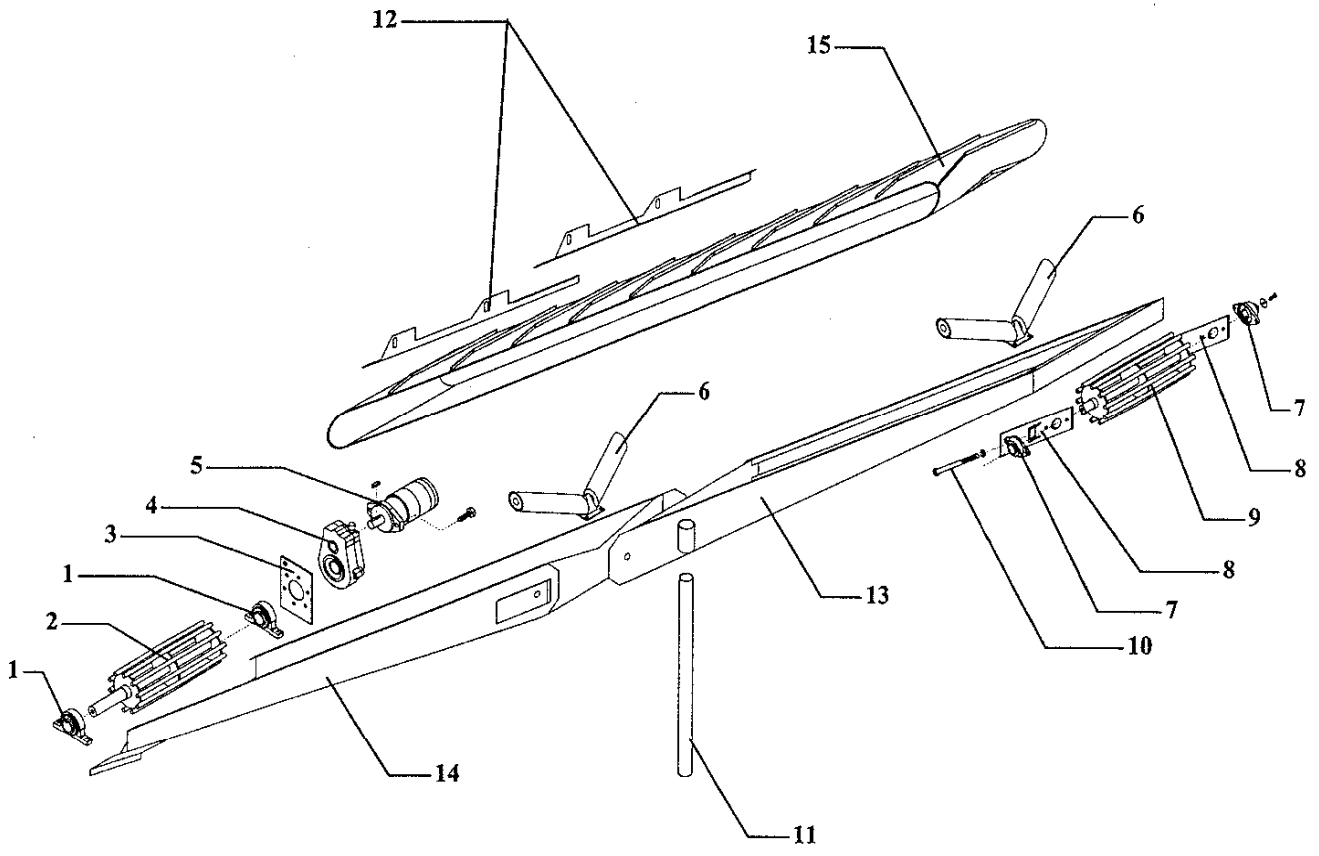
SPARE PARTS LIST UPPER ROLLER  
ASSEMBLY



POS	DENOMINATION	CODE
1	Support SY 25 TF	0230010002
2	Upper roller arm	0003800102
3	Support FYTB 25 TF	0230050001
4	Plane washer 10.5x32	
5	Screw T.E. M10x30	
6	Upper roller	0001800500
7	Shaft upper roller	0001100700
8	Key 8x7 L=40	
9	Mobile roller support	0002702000
10	Bearing 6008 2RS	0229011001
11	Seeger I 68	0234206800
12	Locking ring nut GUK 8 M40x1.5	0220200040
13	Hydraulic engine AR 200 NC25 ( vers. with feeding chain)	0414220001
14	Traction spring Dm.24 Df.3 Lp.99	0226020008
15	Grease cup M6	
16	Handle x lifting roller	0003700900
17	Handle PCV 25/27	0235400001
18	Hydraulic engine AR 315 NC 25 (vers. without feeding chain)	0414231501

S4000  
K4000

ELEVATING BELT ASSEMBLY



**S4000  
K4000**

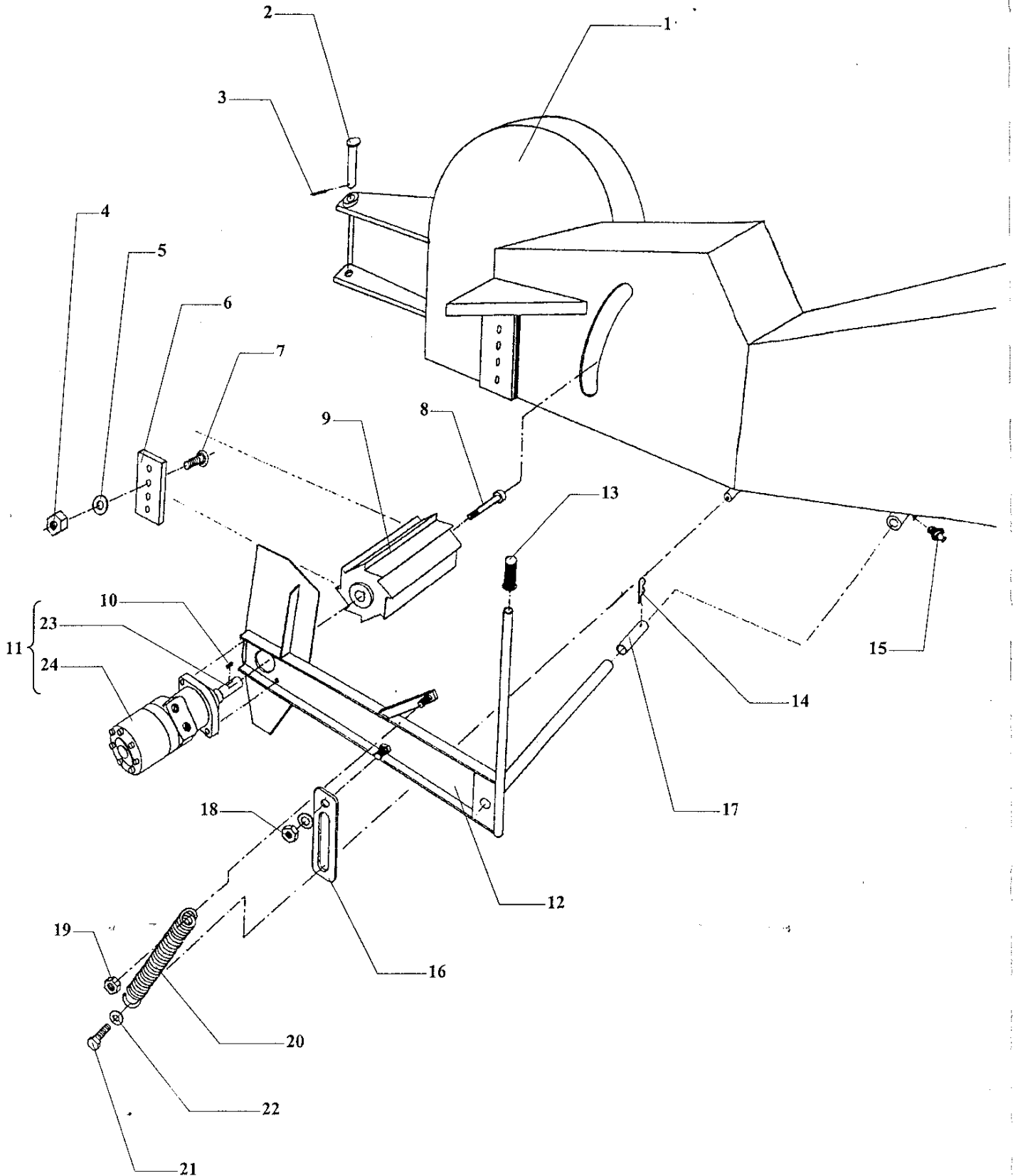
**SPARE PARTS LIST ELEVATING BELT  
ASSEMBLY**



POS	DENOMINATION	CODE
1	Support SY 35 TF	0230010003
2	Engine roller	0001800203
3	Reduction gear support plate	5055900002
4	Reduction gear RD33/SAE4-1/0.66-21	0306040200
5	Hydraulic engine AR 100 NS	0414210002
6	Rollers couple 20° D.60x180	0321000102
7	Support FYTB 25 TF	0230050001
8	Plate band tension	0003800900
9	Idle roller	0001800302
10	Turnbuckle T.E. M10x115	
11	Band turnover handle	0005800200
12	Carter band tightener	0002902701
13	Elevating belt upper structure	0005100600
14	Elevating belt lower structure	0005100500
15	Herringbone rubber belt 6400x380	0208000004

K4000

WOOD-CHIPPER MOBILE ROLLER ASSEMBLY



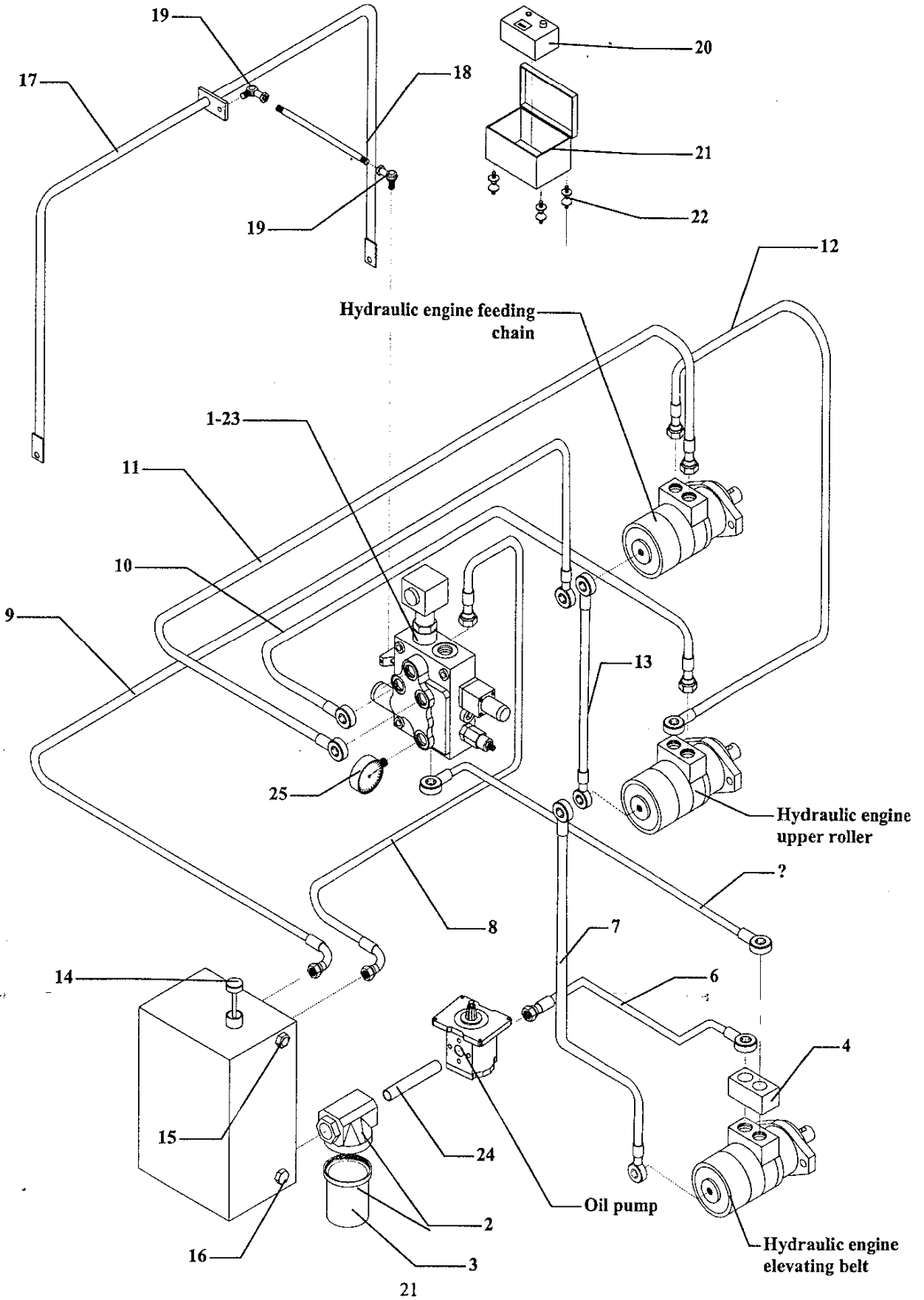
K4000

**SPARE PARTS LIST WOOD-CHIPPER  
MOBILE ROLLER ASSEMBLY**


POS	DENOMINATION	CODE
1	Chipper hopper complete structure	0007100100
2	Pin for chipper hopper	0001105600
3	Elastic pin $\varnothing = 4$ L = 35	
4	Locking nut M 10	
5	Plane washer $\varnothing i = 10,5$ x $\varnothing e = 21$	
6	Counter-hammer for chipper	0001400200
7	Screw T.S.E.I. M 10 x 30	
8	Screw T.C.E.I. M 10 x 120	
9	Feeding roller	0001800800
10	Key 7 x 8 L= 35	
11	Hydraulic engine AR 200 shaft D 40 L= 123	0798110001
12	Roller support lever structure	0003800300
13	Handle PVC D. 25 / 27	0235400001
14	Elastic pin $\varnothing 8$ L=40	
15	Grease cup M6	
16	Stroke limiting device	0005700100
17	Bush	0001200700
18	Locking nut M 12	
19	Locking nut M 12	
20	Spring $\varnothing p = 33$ x $\varnothing$ wire = 6 Lp = 220	0226020016
21	Screw T.C.E.I M 12 x 50	
22	Plane washer $\varnothing i = 13$ x $\varnothing e = 24$	
23	Mobile roller shaft K4000	0001101900
24	Hydraulic engine BR200NC25	0414220001

S4000

S 4000 HYDRAULIC CIRCUIT

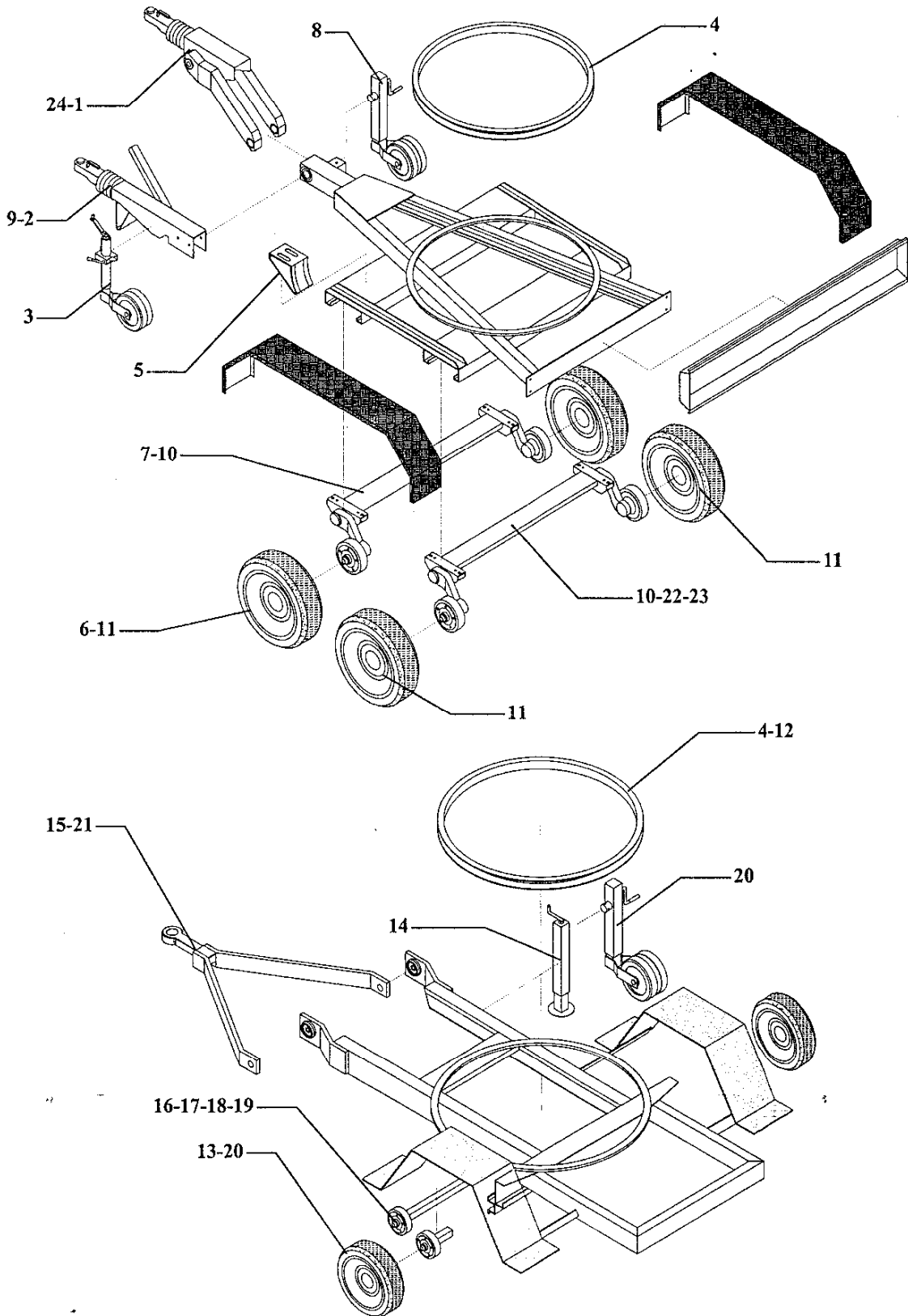


<b>S4000</b>	<b>SPARE PARTS LIST S 4000 HYDRAULIC CIRCUIT</b>	
--------------	--	---

POS	DENOMINATION	CODE
1	Distributor SDM105/1-P(JH3-160)M-Q20 12 V	0406220001
2	Oil filter MPS-50 P25 AGS	0410100060
3	Cartridge x oil filter CS50P25AGS	0410100062
4	Valve VAF 0.8-D (70-200)	0408010012
5	Flex pipe	
6	Flex pipe	
7	Flex pipe	
8	Flex pipe	
9	Flex pipe	
10	Flex pipe	
11	Flex pipe	
12	Flex pipe	
13	Flex pipe	
14	Oil charge plug MINITOR TCLS/Z6G 1"1/4	0255005003
15	Oil level plug 3/8"	0255005002
16	Screw T.C.E.I. M10x20 oil discharge plug	
17	Distributor control handle	0005800600
18	Threaded bar M8	0251001002
19	Articulated head M8	0214010001
20	NO STRESS with hourmeter	0515000100
21	Box x NO STRESS	0511000001
22	Support 24x20 6MA	0216000011
23	Distributor SDM105/1-P(JH3-160)M-Q20	0406220002
24	Pipe rapisarda OIL5SL d.19x29 (L=950mm)	0421000010
25	Pressure gauge 300 bar	0412000300
26		

S4000  
K4000

# TROLLEY ASSEMBLY





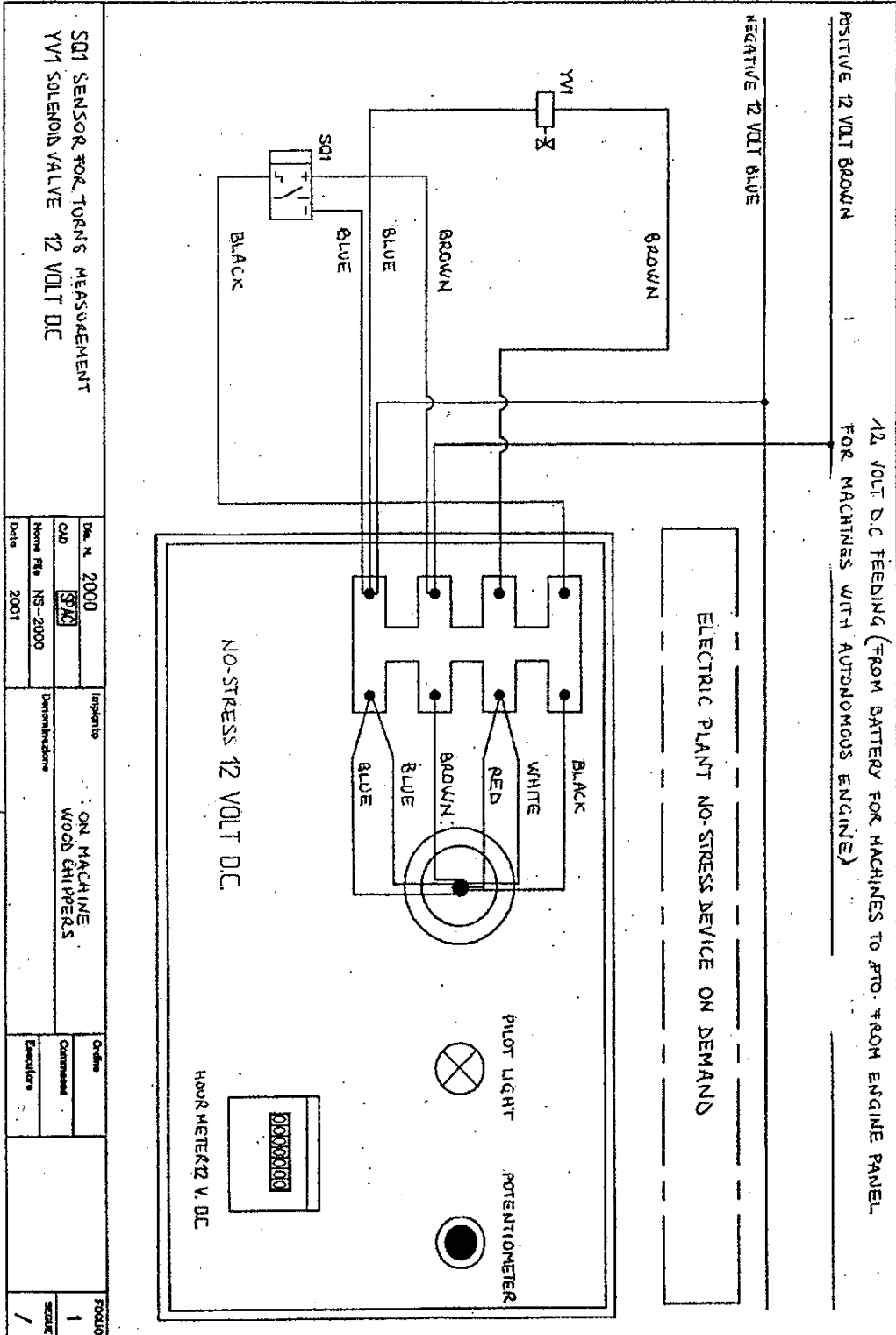
**S4000  
K4000**

**SPARE PARTS LIST TROLLEY  
ASSEMBLY**

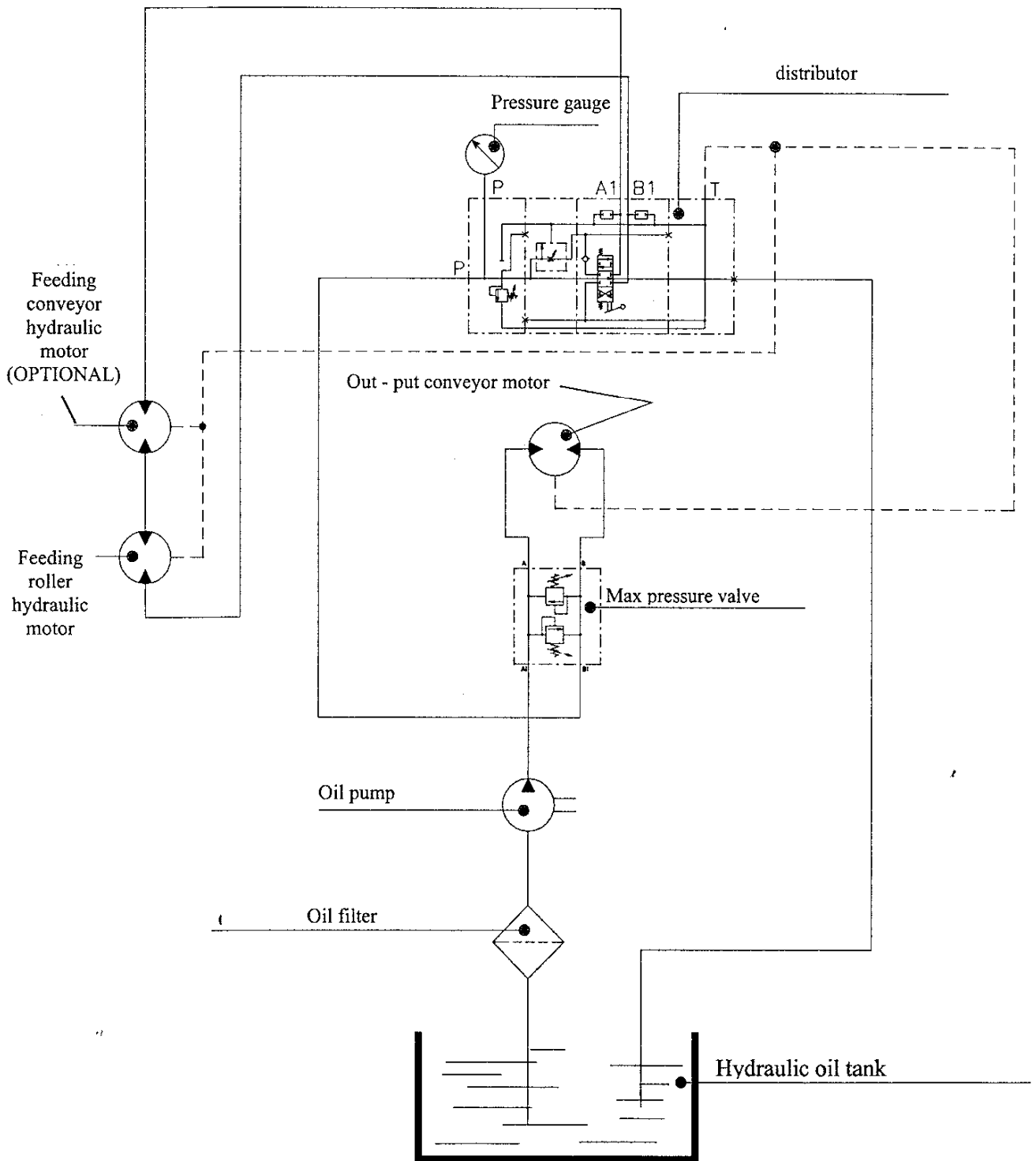


POS	DENOMINATION	CODE
1	Adjusting drawbar 161 VB ( S-K 4000 M tandem fifth wheel)	0309020100
2	Distance pin Q90 S/3 ( S4000 M fixed single-axle)	0309010003
3	Small wheel D.48 ( S4000 M single-axle)	0309040002
4	Fifth wheel D.900	0232090000
5	Galvanized small wedge	0309050001
6	Wheel 175 R13 4F ( S4000 M fixed single-axle)	0233001003
7	Axle 1200/4-2051A A=900 ( S4000 M fixed single-axle)	0308030800
8	Support Q60 forc.90° c/wheel ( S-K 4000 M tandem fifth wheel)	0310002008
9	Drawbar Q251S ( S4000 M tandem fifth wheel - fixed drawbar)	0309010006
10	Axle 850/4-1637 98x4 A=1040 ( S-K 4000 M tandem fifth wheel)	0308033500
11	Wheel 155/70 R13 4F ( S-K 4000 M tandem fifth wheel)	0233001005
12	Fifth wheel D. 700	0232070000
13	Wheel 175/70 R13 4F (Vers. G 25 km/h)	0233002004
14	Foot support Q50x500	0310003002
15	Drawbar x slow tow (Vers. G 25 km/h)	5040910001
16	Axle Q40 L=1250 4 holes (Vers. G 25 km/h)	0308020300
17	Axle Q50 L=1650 5 brake holes (25 km/h engine Vers.)	0308020500
18	Cable x hand brake Lg.3250 (25 km/h engine Vers.)	0212300003
19	Lever x hand brake cod.30011 (25 km/h engine Vers.)	0309050003
20	Wheel 10.0/80-12 5F (25 km/h engine Vers.)	0233002012
21	Drawbar x slow tow (25 km/h engine Vers.)	0726010000
22	Axle 1000/2051 A 98x4 A=900 ( S4000 M tandem fifth wheel)	0308030700
23	Axle 1000/3-2051A 98x4 A=1270 ( K4000 M tandem fifth wheel)	0308031900
24	Adjusting drawbar 251VB ( K4000 M tandem fifth wheel)	0309020200

8. NO - STRESS. Electronic device electric circuit (on demand)



9. Hydraulic circuit functional diagram. Version without NO - STRESS



### Hydraulic circuit functional diagram. Version with NO - STRESS

